

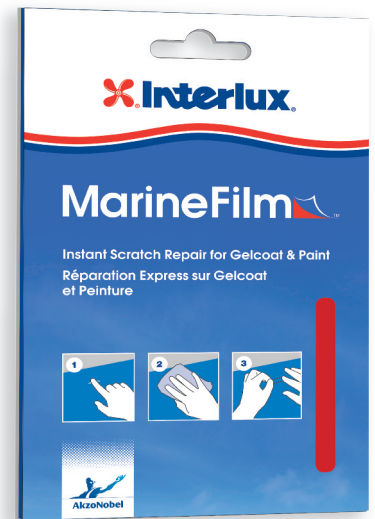
MarineFilm™ Instant Scratch Repair for Gelcoat & Paint

Minor scratches are practically unavoidable. Yet we all know how much even the smallest scratch can be annoying. That's why **MarineFilm** puts a unique smart and easy do-it-yourself solution into the hands of all boat owners. Coated with high quality paint, it covers minor scratches with an ultra-thin adhesive film, instantly covering unsightly scratches in gelcoat or paint above the waterline.

MarineFilm is easy to apply and offered in the twelve most popular gelcoat and Interlux topside paint colors. It's cost-effective, kind to the environment and it provides strong season long adhesion while being easily removable when the boat is next hauled where it can be permanently repaired.

MarineFilm is as easy as 1-2-3. After selecting the right color just:

1 - Locate the scratch 2 - Clean the damaged area and 3 - Carefully apply **MarineFilm**.



Features

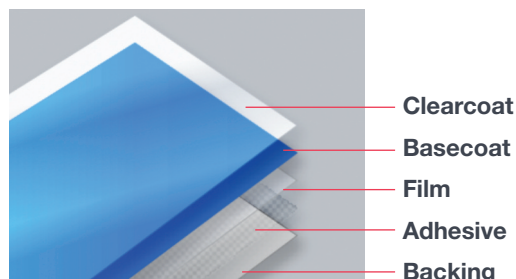
- Easy to Apply
- Offered in 12 colors
- Great adhesion and durability over a variety of surfaces
- Easily removed when necessary
- Two pre-cut shapes
- Tailor fit

Benefits

- Easy to apply, meaning a pleasing finish can be achieved quickly and unsightly scratches can be hidden instantly and without fuss
- Avoids the need for clean up and personal protective equipment during application
- Easy to match popular marine gelcoats and paints
- Provides a season long temporary repair that enables the aesthetics of the topside to be maintained until the boat is next hauled
- No hassle removing when time to permanently repair.
- Ready to use right out of the package
- Custom fit to size of repair

Systems and compatibility

MarineFilm is made up from **five layers** that make up a unique flexible microfilm designed to create an almost invisible repair.



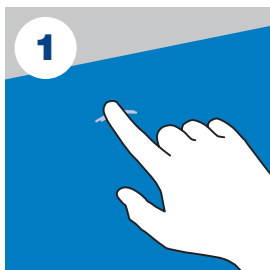
Color Offer

Color Code	Sales Code	Similar to Perfection®/Brightside®
White 011	YSF011/1EAAL	White / Blu-Glo White / Mediterranean White
White 012	YSF012/1EAAL	Snow White
White 013	YSF013/1EAAL	Ivory / Hatteras Off-White
White 014	YSF014/1EAAL	Matterhorn White
White 015	YSF015/1EAAL	Off White
Black 111	YSF111/1EAAL	Black
Blue 211	YSF211/1EAAL	Mauritius Blue / Flag Blue
Blue 212	YSF212/1EAAL	Oxford Blue / Dark Blue
Blue 213	YSF213/1EAAL	Sapphire Blue / Lauderdale Blue
Blue 214	YSF214/1EAAL	Largo Blue / Ocean Blue
Green 311	YSF311/1EAAL	Sea Green / Jade Mist Green
Red 411	YSF411/1EAAL	Rochelle Red

Please Note:

- **MarineFilm** can be removed by using a hair dryer at medium heat.
- When **MarineFilm** is applied to a scratch with flaking paint, traces of paint may come off when **MarineFilm** is removed.
- **MarineFilm** should be removed prior to re-coating.
- Interlux is not liable for any color difference between **MarineFilm** and your topside due to color changes in your topsides over time.
- Do not stretch **MarineFilm** prior to application.
- Apply **MarineFilm** when the substrate is between 59°F and 95°F (15°C and 35°C).
- Allow 24 hours for **MarineFilm** to set before using friction to clean the film / topside.
- Do not clean **MarineFilm** with flammable or toxic substances, only use mild detergent and water.
- Do not use mechanical polishing equipment over **MarineFilm**.
- **MarineFilm** is a temporary cosmetic covering and is not intended as a permanent repair.

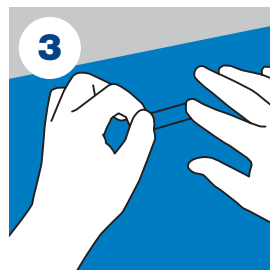
MarineFilm Application



Locate scratch



Clean surface with a soft cloth



Carefully apply **MarineFilm**



International Paint LLC

2270 Morris Avenue, Union, NJ 07083 Tel: (908) 964-2391 Toll free: 1-800-468-7589 Fax: (908) 686-8545 E-mail: InterluxTechnicalService@akzonobel.com

 Interlux, MarineFilm, the AkzoNobel logo and all product names mentioned in this publication are trademarks of, or licensed to, AkzoNobel. © AkzoNobel 2013.

Disclaimer

The information given in this sheet is not intended to be exhaustive. Any person using this product without first making further enquiries as to the suitability of the product for the intended purpose does so at their own risk and we can accept no responsibility for the performance of the product or for any loss or damage (other than death or personal injury resulting from negligence) arising out of such use. The information contained in this sheet is liable to modification from time to time in the light of experience and our policy of continuous development. Please refer to your local representative or www.yachtpaint.com for further information.